

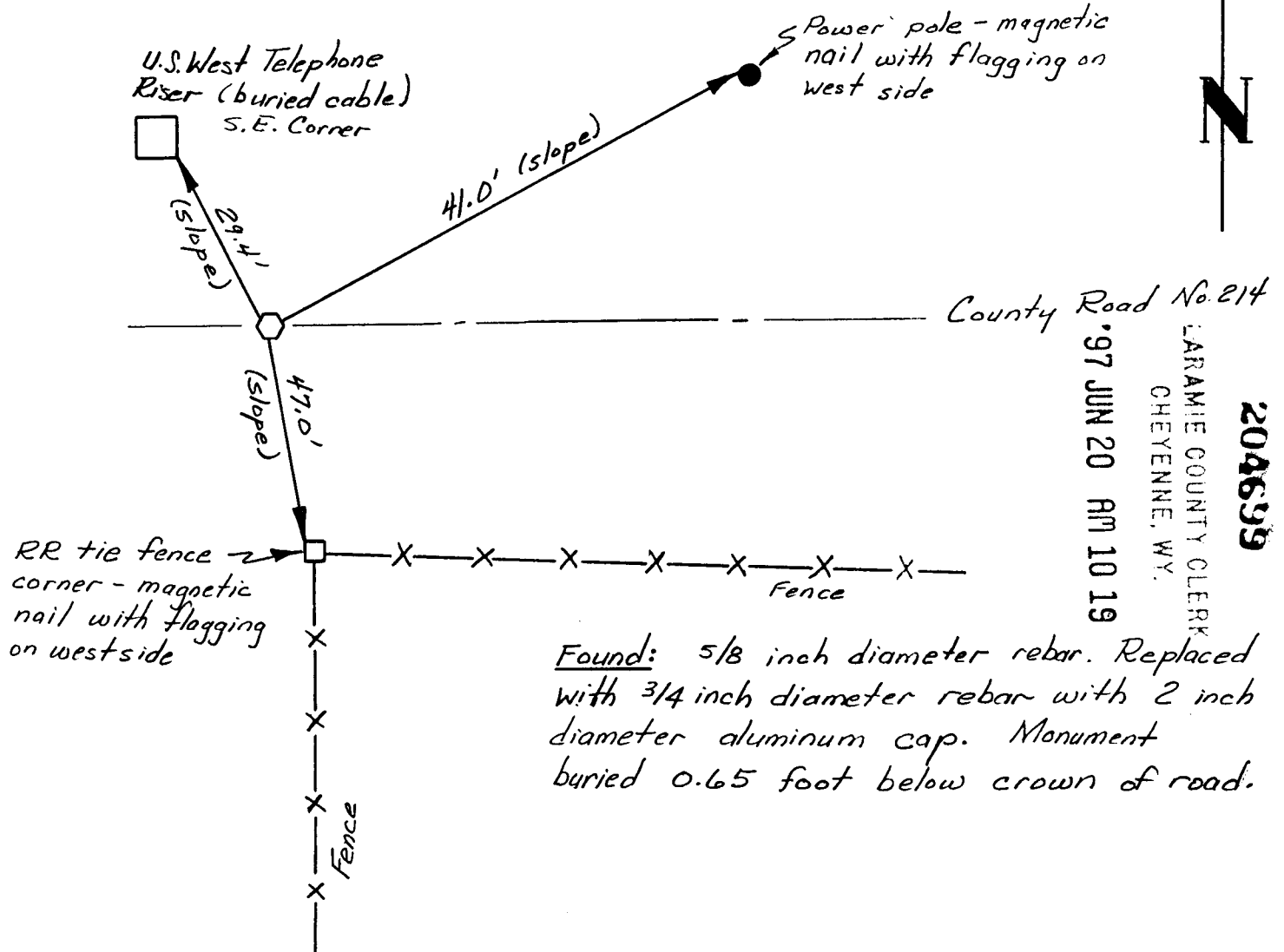
# State of Wyoming Corner Record

(In compliance with the *CORNER PERPETUATION AND FILING ACT*, Wyoming Statutes, 1977, Section 36-11-101, et. seq., and the Rules and Regulations of the Board of Registration for Professional Engineers and Professional Land Surveyors)

Reverse side of this form may be used if more space is needed.

Record of original survey and citation of source of historical information (if corner is lost or obliterated). Description of corner monumentation evidence found and/or monument and accessories established to perpetuate the location of this corner. Sketch of relative location of monument, accessories, and reference points with course and distance to adjacent corner(s) (if determined in this survey). Method and rationale for reestablishment of lost or obliterated corner.

*Section Corner: 5, 6, 7, 8; T14N; R64W; 6th P.M.*



*Found: 5/8 inch diameter rebar. Replaced with 3/4 inch diameter rebar with 2 inch diameter aluminum cap. Monument buried 0.65 foot below crown of road.*

Date of Field Work: 14 June 1997

Office Reference: \_\_\_\_\_

**CROSS INDEX DIAGRAM**

1	2	3	4	5	6	7	8	9	10	11	12	13	14	15	16	17	18	19	20	21	22	23	24	25	
A																									A
B																									B
C	6				5					4					3					2				1	C
D																									D
E																									E
F																									F
G	7					8				9					10					11				12	G
H																									H
J																									J
K																									K
L	13									17					16					15				14	L
M																									M
N																									N
O																									O
P	19									20					21					22				23	P
Q																									Q
R																									R
S																									S
T	30									29					28					27				26	T
U																									U
V																									V
W																									W
X	31									32					33					34				35	X
Y																									Y
Z																									Z

Firm/Agency, Address  
Dr. Herbert W. Stoughton  
Geodetic Engineer  
2821 Carey Avenue  
Cheyenne, Wyoming 82001  
 Telephone Number: (307) 632-7460

This corner record was prepared by me or under my direction and supervision.  
 SEAL & SIGNATURE

*Herbert W. Stoughton*  
 20 June 1997

Corner Name: Not Applicable Section: 5, 6 7, 8 T14N R64W ; 6th P.M. Cross-Index No.: E-5

SBRPEPLS/PLS W: March 1994

BOOK 1453

0837